

Product Description

Press-fitting accessory for plumbing and heating installations, available in brass and PPSU.

Multiplex accessories are specifically designed for attachment to Multiplex multilayer pipes_(PEX/Al/PEX and PERT/Al/PERT) through compression bonding technique or pressfitting system.

The radial compression fixed sleeves are made of stainless steel and are subject to the fitting body by a plastic ring.

In the brass version, the material used is exclusively European brass of the best quality (CW617N), in compliance with the health legislation of the most demanding countries of the European Union.

Material	Composition					
	Cu	Al	Fe	Ni	Pb	Sn
Latón CW617N	57,0 – 59,0	max .0,05	max. 0,30	*max. 0,1	*1,6 – 2,2	max. 0,30

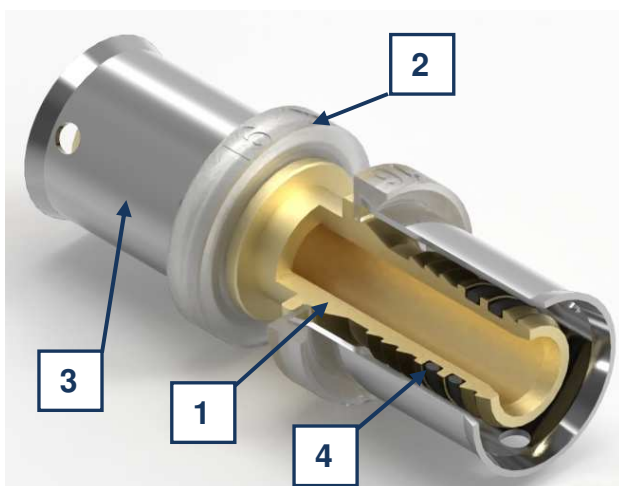
* low lead and nickel content according European Directive 98/83 / CE and German standard DIN 50930

The material used for the PPSU type shows high performance to be used in drinking water installations:

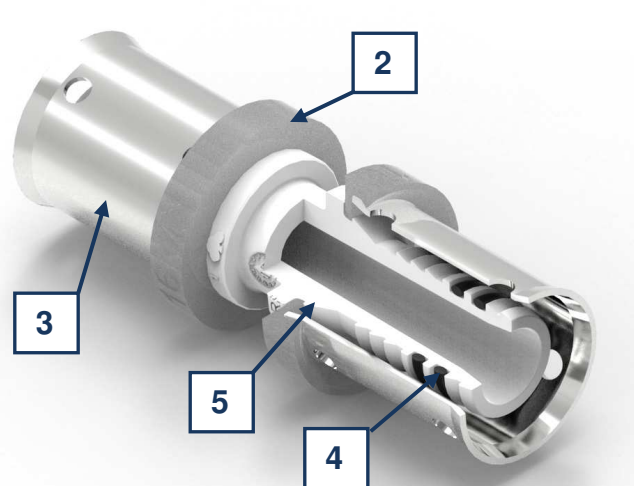
- **Low internal rugosity:** less pressure loss in comparison to brass fittings.
- **High chemical resistance:** this material is not attacked by water chlorine. It doesn't show galvanic corrosion or rusting. Additionally, it is not attacked by building materials.
- **Weight:** PPSU fittings are much lighter than brass fittings.
- **High impact resistance:** PPSU fittings are highly tough and durable. They withstand hard impacts without fracturing.
- **High heat resistance:** the material withstands temperatures up to 134°C.

List of components:

Order No.	Name	Material	Manufacturing process
1	Brass body	CW617N	Machining / stamping
2	Plastic ring	PPH (Polypropylene homopolimere)	Inyection moulding
3	SS ring	Stainless Steel AISI 304	Stamping
4	O-ring	EPDM/70-PEROX	Inyection moulding
5	PPSU body	PPSU (Polyphenylsulfone)	Inyection moulding



Brass fitting



PPSU fitting

Insulating ring color in brass fittings

Color	Size of the brass fitting									
	16	18	20x2	20x2,5	25	26	32	40	50	63
Translucent white	•	•	•		•		•	•	•	•
Red				•		•				

Insulating ring color in PPSU fittings

Color	Size of the PPSU fitting									
	16		20x2		25	26	32			
Translucent white	•		•		•		•			
Red						•				

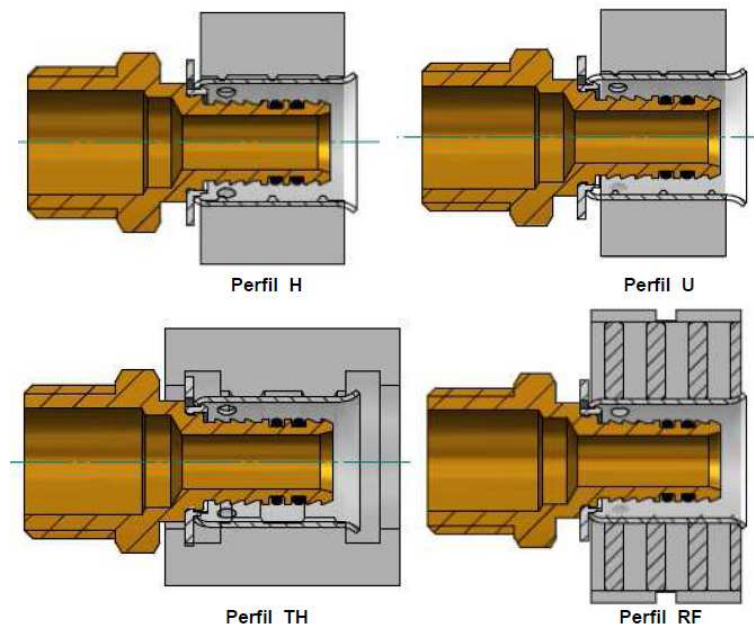
Advantages of fittings Multiplex of BLANSOL

- Increased resistance to tensile stresses**
The geometry of the SS ring allows the positioning of the clamping jaw with respect to the shape of the fitting, which improves its resistance to tensile stress.
- No timeouts**
This system requires no waiting once made the union with allowing installation into service immediately.
- Guarantee seal**
Multiplex fitting meets the most stringent European regulations which guarantees the tightness and sanitary qualities.
- Brass with low lead**
The brass alloy used in Multiplex fittings contains a low lead content, so that it meets the most stringent European regulations concerning materials in contact with drinking water (European Directive 98/83 / CE and German standard DIN 50930).
- Double corrosion chamber**
The plastic ring which holds the SS ring, prevents the contact between the three system metals (stainless steel, brass and aluminum of the multilayer tube) completely eliminated the possibility that the water may come into contact with the aluminum causing electrolytic corrosion.

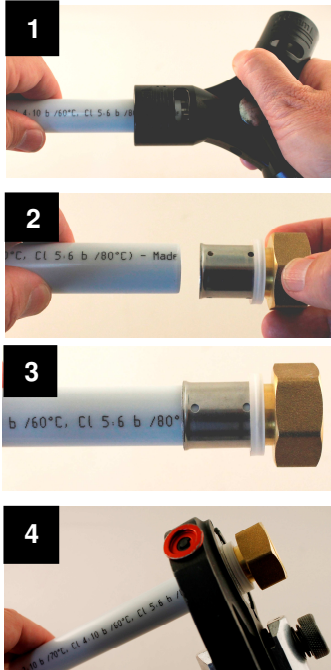
Compatibility table of MULTYPEX accessories with pressing profiles type U, RF, H and TH:

Pressing profile	Diameter									
	16	18	20x2	20x2,5	25	26	32	40	50	63
U	•	•	•	•	•	•	•	•	•	•
RF	•	•	•	•	•	•	•			
H	•	•	•	•	•	•	•			
TH	•		•		•	•	•			

Pressing diagram



Assembly instructions diameters 16 to 32 mm



1.- CALIBRATE

Calibrate the pipe ensuring proper beveled

2.- ASSEMBLY

Insert the pipe into the SS ring

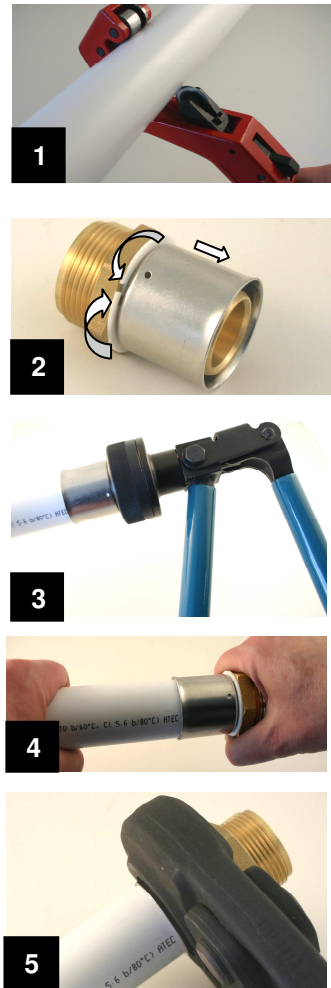
3.- CHECK

Make sure the pipe is visible through the two holes of SS ring

4.- PRESS THE UNION

Assembly instructions diameters 40, 50 and 63 mm

The assembly process for large diameter accessories is different from that for small diameters. When cutting a multilayer tube, an ovalization always occurs which, at 40, 50 and 63, can make the reaming process very difficult. BLANSOL does not use the traditional gauge in these diameters, but rather uses an expander that flares the tube, completely eliminating the problem of its possible ovality.



1.- CUTTING THE TUBE

At right angles with pipe cutters or scissors.

2.- DISASSEMBLY THE SS RING

Press the plastic ring and remove the SS ring of the piece.
Insert the pipe into the SS ring.

3.- TUBE EXPANSION

With the SS ring mounted, expand the tube with the help of the BARBI expander. Rotate the tube between each expansion.

4.- INSERT THE TUBE

Once the tube has been widened with the SS ring fitted, insert it into the accessory by pressing on the plastic ring (see step 2) until the ring butts against the pipe.
Make sure the tube is visible through the hole in the

5.- PRESS THE UNION



BARBI Expander

Range of fittings

Available diameters of Multiplex brass fittings: 16,18, 20x2,0, 20x2,5, 25, 26, 32, 40, 50 and 63.
Available diameters of Multiplex PPSU fittings: 16, 20x2, 25, 26 and 32.

Work parameters

Maximum working pressure at 20 °C: 10 bar (Pmax. of the multilayer pipe)
Maximum working temperature: 95 °C

Recommendations

- The pipe should be cut with a pipe cutter or suitable scissors to ensure a clean cut perpendicular to the pipe.
- Check that the end of the tube is clean and without burrs
- Use only multilayer Barbi pipes (PEX/Al/PEX and PERT/Al/PERT).
- Installation of threaded accessories: we recommend using PTFE (Teflon) tape or thread as sealing material for the male threads; avoid using hemp tape.
- **Chemicals:** Avoid contact or exposure to vapors from PPSU fittings with the following products: **PVC glues, gels and solvents, polyurethane foams, liquid metal sealants, mineral greases and lubricants, paints, disinfectants and bleach.**



Certifications

The Multiplex fitting has been designed and manufactured according to the requirements specified in the UNE EN ISO 21003-5 standard.

The threads of the accessories are cylindrical in accordance with ISO 228.

The Multiplex assembly system with brass fitting, have Product Certificates issued by AENOR, QB (French standard), ÖNORM (Austrian standard) and Gosstandard (Russian standard).



The Multiplex assembly system with PPSU fitting have the Product Certificate issued by AENOR, QB and Gosstandard.

Labeled

Box Labeling :

Part number of piece, the product description (5 languages), dimensions, the barcode, units per box, the traceability (WYYW) and certifications.

Individual bag labeling :

Part number of piece, the product description (5 languages), dimensions, the barcode, traceability (WYYW) and certifications.

Warranty Barbi

Multilayer pipes and brass and PPSU fittings for the connection system Multiplex, are guaranteed for a maximum amount of 1,5 million euros, for 15 years, for damages caused by defects in the product design or manufacturing default.

